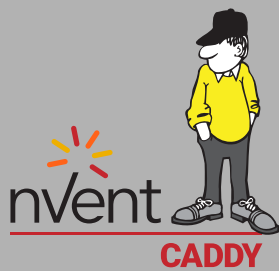
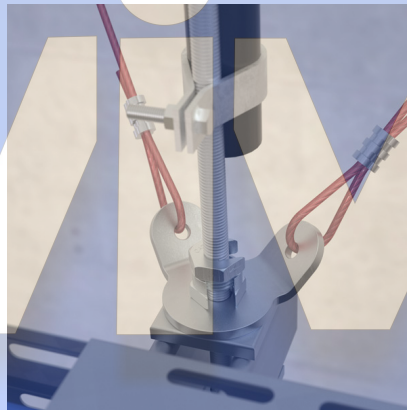
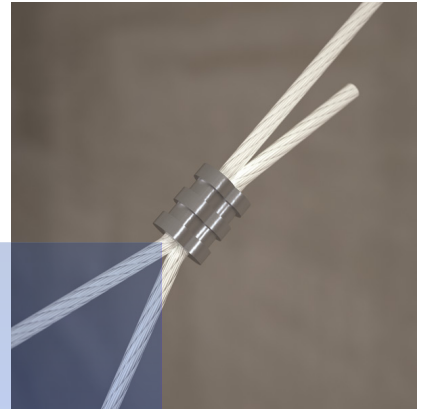


FIXING, FASTENING AND SUPPORT PRODUCTS

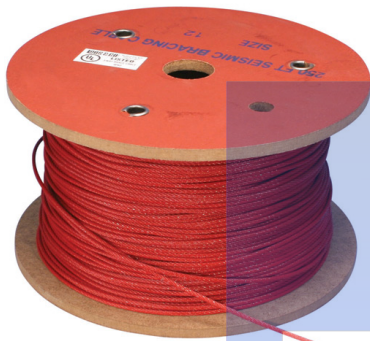
FEATURED PRODUCTS



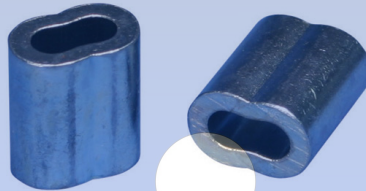
Cable Bracing

nVent CADDY cable bracing is an ideal alternative to rigid bracing for fire sprinkler systems when brace lengths greater than 19' - 8" (6 m) are required or when confined/crowded spaces make rigid systems difficult to install. The system includes pre-stretched steel cable, attachment fittings, oval sleeves and related tools. The system can also be used to brace electrical, mechanical and plumbing systems.

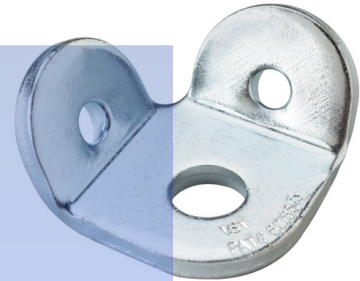
- Color-coated cable conforms to NFPA® 13 requirements and makes it highly visible and easier to identify cable sizes
- UL® Listed
- Made in the USA



Cable Spool



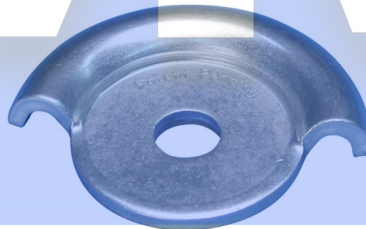
Oval Sleeve



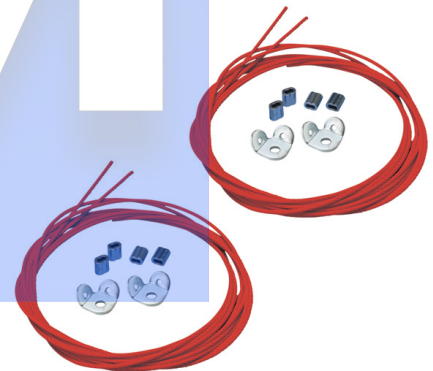
Universal Restraint Clip



Universal Restraint Clip, Retrofit



No Pry Clip



URC Attachment Kit



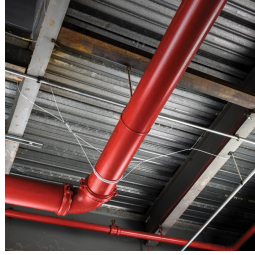
Cable Cutter



Swaging Tools



Cable Spool



- Cut to length as needed
- Pre-stretched restraint cable



| Part Number | Brace Size | Diameter | Cable Length | UL Listed Load | Color | Certifications |
|--|------------|----------|--------------|----------------|--------|----------------|
| Material: Steel – Finish: Pregalvanized, Painted | | | | | | |
| CSB12CBL | #12 | 3/32" | 250' | 600 lb | Red | UL |
| CSB18CBL | #18 | 1/8" | 250' | 1,100 lb | White | UL |
| CSB36CBL | #36 | 3/16" | 250' | 2,800 lb | Blue | UL |
| CSB48CBL | #48 | 1/4" | 250' | 4,600 lb | Yellow | UL |
| Material: Stainless Steel 316 [EN 1.4401] | | | | | | |
| CSB12CBLSS | #12 | 3/32" | 250' | - | - | - |
| CSB18CBLSS | #18 | 1/8" | 250' | - | - | - |
| CSB36CBLSS | #36 | 3/16" | 250' | - | - | - |
| CSB48CBLSS | #48 | 1/4" | 250' | - | - | - |

Cable is powder coated.

Oval Sleeve

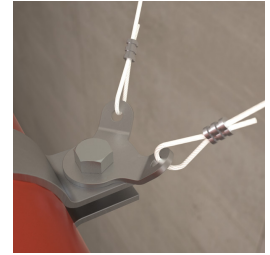
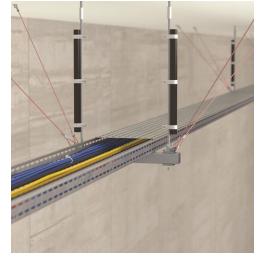
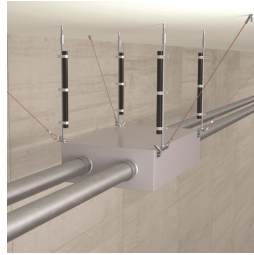
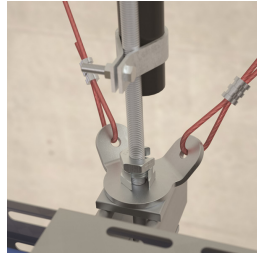


- Creates secure loop ends
- Swage with swaging tools

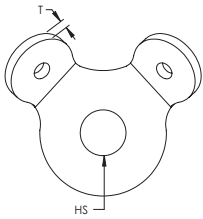
| Part Number | Brace Size |
|--|------------|
| Material: Copper – Finish: Electrogalvanized | |
| CSB12SLVB | #12 |
| CSB18SLVB | #18 |
| CSB36SLVB | #36 |
| CSB48SLVB | #48 |
| Material: Stainless Steel 316 [EN 1.4401] | |
| CSB12SLVBSS | #12 |
| CSB18SLVBSS | #18 |
| CSB36SLVBSS | #36 |
| CSB48SLVBSS | #48 |

Two side-by-side swages required on #12 and #18 cable. Three side-by-side swages required on #36 and #48 cable.
Check swage with gauge (not included).

Universal Restraint Clip



- Attaches cable brace to structure



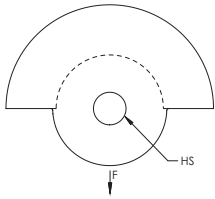
| Part Number | Brace Size | Hole Size HS | Thickness T | UL Listed Load | Certifications |
|---|---------------|--------------|-------------|----------------|----------------|
| Material: Steel – Finish: Electrogalvanized | | | | | |
| CSBURC14 | #12, #18, #36 | 5/16" | 0.168" | 1,600 lb | UL |
| CSBURC38 | #12, #18, #36 | 7/16" | 0.168" | 1,600 lb | UL |
| CSBURC12 | #12, #18, #36 | 9/16" | 0.168" | 1,600 lb | UL |
| CSBURC58 | #12, #18, #36 | 11/16" | 0.168" | 1,600 lb | UL |
| CSBURC34 | #12, #18, #36 | 13/16" | 0.168" | 1,600 lb | UL |
| CSBURC78 | #12, #18, #36 | 15/16" | 0.168" | 1,600 lb | UL |
| CSBURC4812 | #48 | 9/16" | 0.250" | 4,600 lb | UL |
| CSBURC4858 | #48 | 11/16" | 0.250" | 4,600 lb | UL |
| CSBURC4834 | #48 | 13/16" | 0.250" | 4,600 lb | UL |
| Material: Stainless Steel 316 [EN 1.4401] | | | | | |
| CSBURC14SS | #12, #18, #36 | 5/16" | 0.168" | - | - |
| CSBURC38SS | #12, #18, #36 | 7/16" | 0.168" | - | - |
| CSBURC12SS | #12, #18, #36 | 9/16" | 0.168" | - | - |
| CSBURC58SS | #12, #18, #36 | 11/16" | 0.168" | - | - |
| CSBURC34SS | #12, #18, #36 | 13/16" | 0.168" | - | - |
| CSBURC78SS | #12, #18, #36 | 15/16" | 0.168" | - | - |

Mount to the structure using the center hole. Loop cable through the holes in the bent tabs and swage in place.

No Pry Clip



- Eliminates prying effect on fasteners and anchors

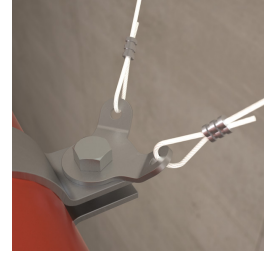
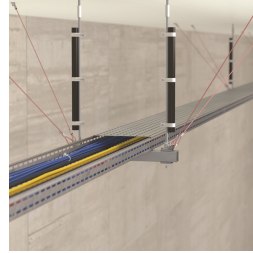
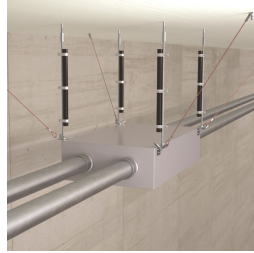
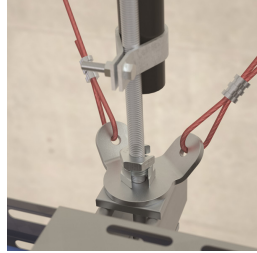


Material: Steel
Finish: Electrogalvanized



| Part Number | Brace Size | Hole Size HS | UL Listed Load |
|-------------|---------------|-----------------|----------------|
| CSBNPC38 | #12, #18, #36 | 7/16" | 2,800 lb |
| CSBNPC12 | #12, #18, #36 | 9/16" | 2,800 lb |
| CSBNPC58 | #12, #18, #36 | 11/16" | 2,800 lb |
| CSBNPC34 | #12, #18, #36 | 13/16" | 2,800 lb |

URC Attachment Kit



- Attaches cable brace to structure
- Two-way bracing kit with oval sleeves
- Wraps around structural steel members

Material: Steel
Finish: Electrogalvanized, Painted

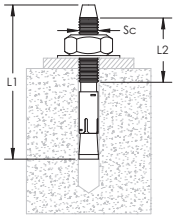


| Part Number | Hole Size | Brace Length | Cable Length | UL Listed Load |
|---------------------------------|-----------|--------------|--------------|----------------|
| Brace Size: #12 - Color: Red | | | | |
| CSB2W12URC38L10 | 7/16" | 10' | 14' | 600 lb |
| CSB2W12URC38L20 | 7/16" | 20' | 24' | 600 lb |
| CSB2W12URC12L10 | 9/16" | 10' | 14' | 600 lb |
| CSB2W12URC12L20 | 9/16" | 20' | 24' | 600 lb |
| Brace Size: #18 - Color: White | | | | |
| CSB2W18URC38L10 | 7/16" | 10' | 14' | 1,100 lb |
| CSB2W18URC38L20 | 7/16" | 20' | 24' | 1,100 lb |
| CSB2W18URC12L10 | 9/16" | 10' | 14' | 1,100 lb |
| CSB2W18URC12L20 | 9/16" | 20' | 24' | 1,100 lb |
| Brace Size: #36 - Color: Blue | | | | |
| CSB2W36URC12L10 | 9/16" | 10' | 14' | 1,600 lb |
| CSB2W36URC12L20 | 9/16" | 20' | 24' | 1,600 lb |
| CSB2W36URC58L10 | 11/16" | 10' | 14' | 1,600 lb |
| CSB2W36URC58L20 | 11/16" | 20' | 24' | 1,600 lb |
| Brace Size: #48 - Color: Yellow | | | | |
| CSB2W48URC12L10 | 9/16" | 10' | 14' | 3,500 lb |
| CSB2W48URC12L20 | 9/16" | 20' | 24' | 3,500 lb |
| CSB2W48URC58L10 | 11/16" | 10' | 14' | 3,500 lb |
| CSB2W48URC58L20 | 11/16" | 20' | 24' | 3,500 lb |

Wedge Expansion Anchor Bolt



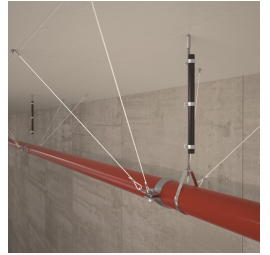
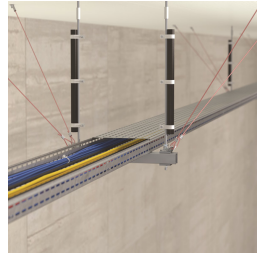
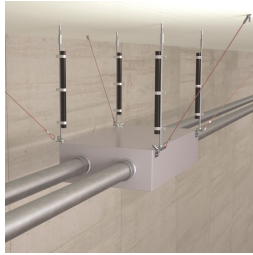
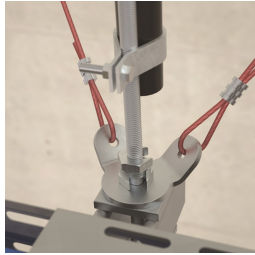
- ICC® approved for use in cracked and uncracked concrete
- Includes nut and washer
- Meets NFPA® 13 as pre-qualified for seismic applications



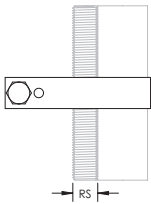
Material: Steel
Finish: Electrogalvanized

| Part Number | Screw Diameter Sc | Length 1 L1 | Length 2 L2 | Drill Bit Diameter | Torque TQ |
|----------------|----------------------|----------------|----------------|--------------------|--------------|
| CSBCAB030037EG | 3/8" | 3" | 1 3/4" | 3/8" | 20 ft lb |
| CSBCAB037550EG | 1/2" | 3 3/4" | 2 1/8" | 1/2" | 40 ft lb |
| CSBCAB045050EG | 1/2" | 4 1/2" | 2 7/8" | 1/2" | 40 ft lb |
| CSBCAB055050EG | 1/2" | 5 1/2" | 3 7/8" | 1/2" | 40 ft lb |
| CSBCAB047562EG | 5/8" | 4 3/4" | 2 7/8" | 5/8" | 60 ft lb |
| CSBCAB060062EG | 5/8" | 6" | 4 1/8" | 5/8" | 60 ft lb |
| CSBCAB055075EG | 3/4" | 5 1/2" | 3 1/4" | 3/4" | 110 ft lb |
| CSBCAB062575EG | 3/4" | 6 1/4" | 4" | 3/4" | 110 ft lb |

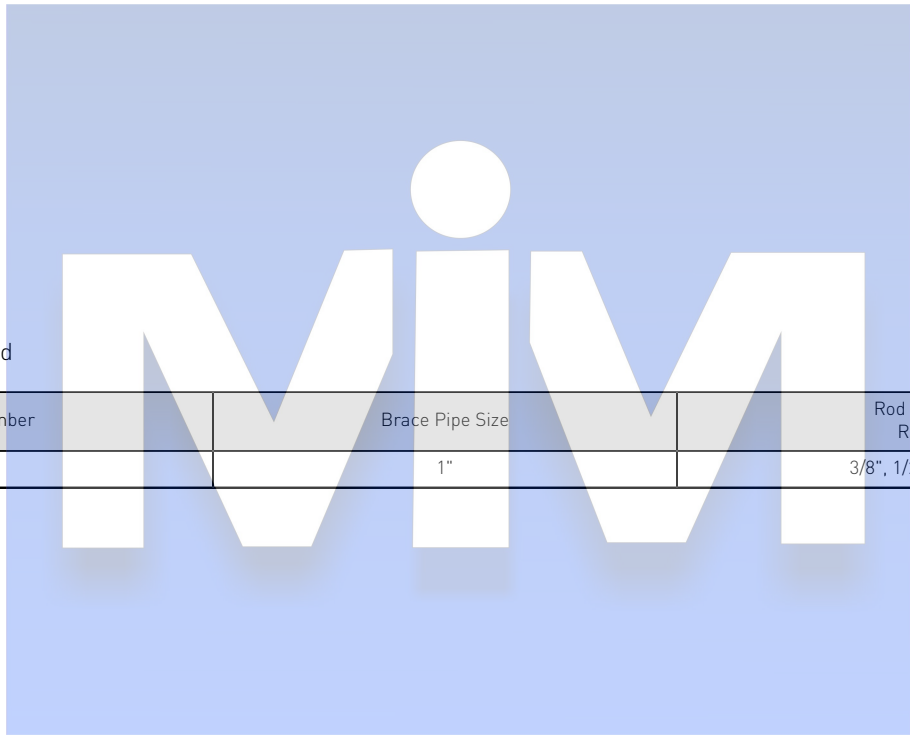
Pipe Rod Stiffener



- For use with Schedule 40 or Schedule 10 pipe
- Secures pipe to threaded rod for stiffening



Material: Steel
Finish: Electrogalvanized



| Part Number | Brace Pipe Size | Rod Size RS |
|-------------|-----------------|------------------|
| CSBRS1 | 1" | 3/8", 1/2", 5/8" |

Cable Cutter

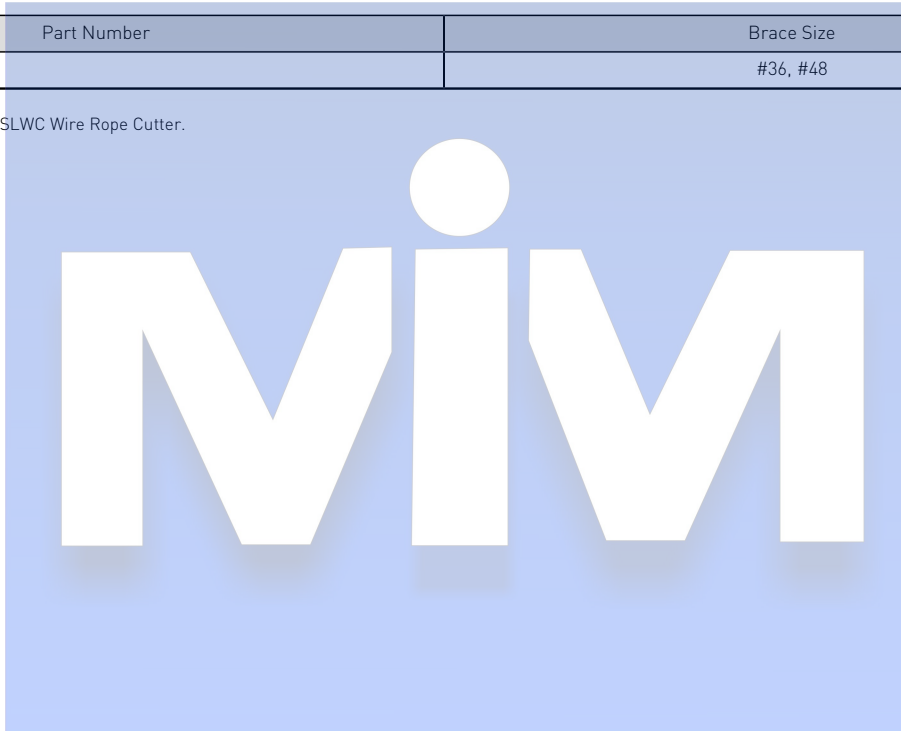


- Designed to reduce cable fraying

Material: Steel

| | Part Number | Brace Size |
|--------|-------------|------------|
| CSBC48 | | #36, #48 |

For brace sizes #12 and #18 use SLWC Wire Rope Cutter.



Manual Swaging Tool



Material: Steel

| Part Number | Brace Size |
|-------------|------------|
| CSB12SBHS | #12 |
| CSB48 | #48 |



Multi-Size Manual Swaging Tool



Material: Steel

| Part Number | Brace Size |
|-------------|---------------|
| CSB3346SB | #12, #18, #36 |



Battery-Operated Swaging Tool

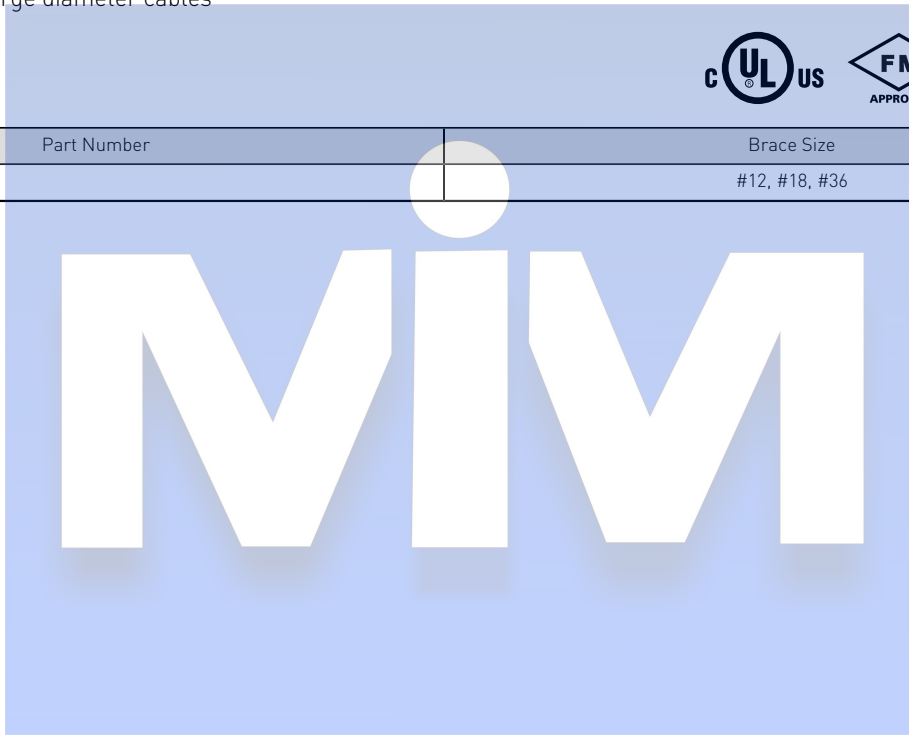


- Battery-operated tool provides consistent swaging
- Provides less strenuous installation when compared to manual swaging tools
- Cordless design allows installers to easily move around the job site
- Compatible with large diameter cables

Material: Steel



| Part Number | Brace Size |
|-------------|---------------|
| CSBBS121836 | #12, #18, #36 |



FM is a registered certification mark of FM Approvals LLC, LTD. ICC is a registered trademark of International Code Council. NFPA is a registered trademark of National Fire Protection Association, Inc. UL, UR, cUL, cUR, cULus and cURus are registered certification marks of UL LLC.

WARNING

nVent products shall be installed and used only as indicated in nVent’s product instruction sheets and training materials. Instruction sheets are available at www.erico.com and from your nVent customer service representative. Improper installation, misuse, misapplication or other failure to completely follow nVent’s instructions and warnings may cause product malfunction, property damage, serious bodily injury and death and/or void your warranty.

© 2019 nVent All rights reserved

nVent, nVent CADDY, nVent ERICO, nVent ERIFLEX and nVent LENTON are owned by nVent or its global affiliates.

All other trademarks are the property of their respective owners. nVent reserves the right to change specifications without prior notice.

